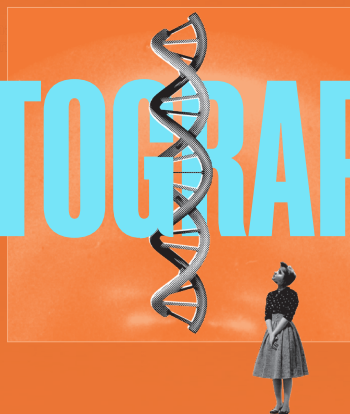


PHOTOGRAPH 51



By Anna Ziegler
Directed by David Berthold
Venue Playhouse Theatre
When 06 Jun-14 Jun
Run time 90 mins

Content advice-*Photograph 51* contains haze and flashing lights, mature themes. Suitable for all ages.

CAST (in order of appearance)

Rosalind Franklin Ginger Sansom
Maurice Wilkins Thomas Russell
James Watson James Thorn
Francis Crick Reid Perry
Don Caspar Charlie Chandler
Ray Gosling Jonah Stewart

SYNOPSIS

She Found the Code. They Took the Glory.

It's 1951, and the race is on to unlock the secret of life. At its centre is Rosalind Franklin, a brilliant young scientist whose pioneering work captured the image that would lead to the discovery of DNA's double helix—transforming science forever. Yet her contribution was nearly forgotten.

Anna Ziegler's acclaimed, West End-hit play shines a light on an unsung scientist and the fierce ambition, sexism, and sacrifice behind one of the greatest discoveries of the 20th century.

Who gets to write history—and who gets left out?

DIRECTOR'S NOTE

Is life a race?

That question lingers throughout *Photograph 51*. The men around Rosalind Franklin chase recognition. She seeks clarity. "I just do my work," she says. But her refusal to compete leaves her isolated.

Photograph 51 isn't just about a scientific breakthrough. It's about the young people caught in its orbit—driven, uncertain, urgent. They're in their twenties or thirties, like the NIDA students who have created this production. The stakes are high. For Franklin, the only woman in the room, they're higher still.

This play asks what gets lost in the race—what we miss when we move too fast, or when brilliance doesn't shout. We hope it helps you see again: the things we miss, the people we overlook, and the legacies shaped in silence.

Director David Berthold**
Costume Designer Alice Vance
Lighting Designer Ethan Coombes
Set & Props Designer Ella Wilkinson
Sound Designer & Composer Guinevere Fisher
Video Designer Hayley Cantrill
Voice Coach Patrick Klavins*
Assistant Director Emma Johns
Assistant Director Liam Wallis
Production Stage Manager Amelie McCarthy
Construction Manager and Supervisor Nick Day**
Costume Supervisor Raphaela Kuhn
Props Supervisor Connor Newman
Props Maker Oliver Gregg
Deputy Stage Manager Eloise Tanti
Head Electrician Lola Hunt
Video Systems Supervisor Shevon McCormack-Edwards
Costume Assistant Designer Alex Camidge
Set Assistant Designer Jake Molloy
Costume Assistant Shelley Hayes
Props Assistant Matthew Rahardjo
Assistant Stage Manager Coco Tong
Assistant Stage Manager Lucy van Luyt
Set Construction Assistant Beau Brown
Floor Electrician Luke Ferguson
Environmental Sustainability Coordinator Jake Molloy
Environmental Sustainability Coordinator Sev Murphy